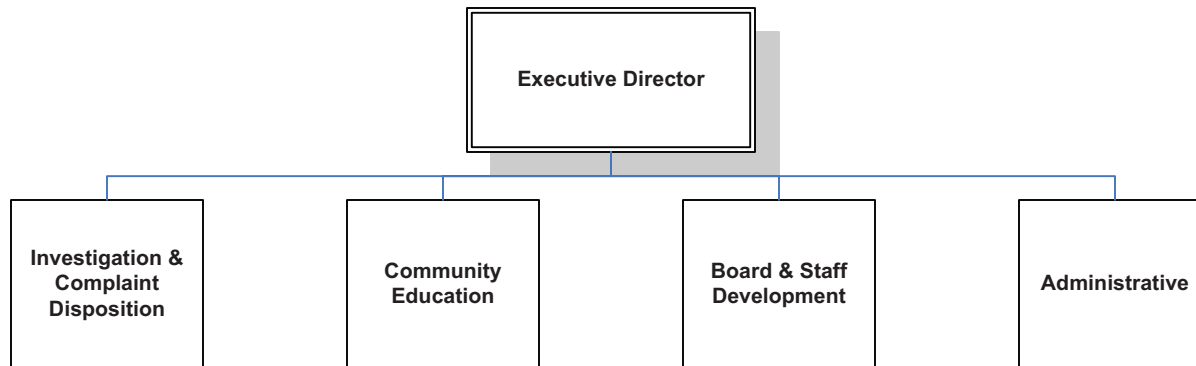


Citizen Police Review Board



Citizen Police Review Board



Mission

The Citizen Police Review Board promotes responsible citizenship and respectable law enforcement through mutual accountability. The broad mandate of the Citizen Police Review Board is to provide independent review of the conduct of the Pittsburgh Bureau of Police. To accomplish this assignment, the Board will thoroughly investigate specific allegations of misconduct, hold public hearings to examine such allegations; evaluate current police procedures and promote safe, professional and effective law enforcement practices through public education on rights, responsibilities and police authority; and make recommendations to the Mayor and Chief of Police regarding police policies and procedures.

Description of Services

Investigation and Complaint Disposition - Citizens must file complaints with the CPRB within six months of the incident from which the complaint arises. Upon contact from a citizen, the Intake Coordinator conducts an interview and initiates the internal case management of the complaint. The Executive Director reviews each citizen complaint, develops a preliminary investigative plan and assigns the case to an Investigator. Initial fact finding is conducted, and results are presented to the Board. The Board considers the evidence and determines whether to further an investigation into the allegations of misconduct or to dismiss the complaint. Complaints may proceed through investigation to a public hearing at the Board's discretion. Findings and recommendations resulting from public hearings are forwarded to the Mayor and Chief of Police who must respond to the Board. Patterns emerging from complaints and allegations of misconduct may be presented to the Board for consideration of policy recommendations to the Chief of Police and Mayor.

Community Education - The goal of community education and outreach is to improve relations between citizens and police by developing or enhancing common knowledge and respect of police authority, practices and procedures, and civilian expectations of police conduct. Outreach utilizes printed material, media, and personal appearances of members and staff to ensure the public has an opportunity to be informed of the CPRB role and common rights and responsibilities of citizenship. The effort directed to citizens (1) ensures that the public is adequately prepared to respond to police encounters in a manner conducive to the safety of the citizen and the officer, and (2) conveys information on filing complaints when such encounters are perceived as offensive. The outreach to police officers is designed to encourage participation in investigations, explain the process, and integrate their concerns into the community education effort.

Board and Staff Development - Training for Members encompasses topics mandated by City Ordinance, including police training, police policies and procedures, criminal, civil and constitutional law as well as human rights and contemporary practices of civilian review of law enforcement policies and police behavior. Staff training is designed to enhance investigative skills, utilize technology for research and case management, and develop mediation and conciliation skills as well as crisis management and safety skills.

Administrative - The Executive Director is responsible for administering the policies and procedures of the Board and the City which affect the daily operation of the Citizen Police Review Board. Activities of this core service include the planning, organization, development, evaluation, and implementation of efficient and effective management strategies of fiscal, personnel, information systems, and related support to maximize the utility of the resources available.

City of Pittsburgh
2012 Operating Budget

Citizen Police Review Board

Subclass	Description	2012 Budget	2011 Budget	2010 Actual	Change
10	Salaries	\$ 318,023	\$ 311,788	\$ 281,776	\$ 6,235
20	Premium Pay	\$ -	\$ -	\$ -	\$ -
30	Education and Training	\$ 7,232	\$ 7,232	\$ 2,687	\$ -
40	Fringe Benefits	\$ -	\$ -	\$ -	\$ -
50	Uniforms	\$ -	\$ -	\$ -	\$ -
100	Supplies	\$ 5,160	\$ 5,160	\$ 3,239	\$ -
110	Materials	\$ -	\$ -	\$ -	\$ -
120	Equipment	\$ 1,576	\$ 1,576	\$ 974	\$ -
130	Repairs	\$ 257	\$ 257	\$ -	\$ -
140	Rentals	\$ 60,000	\$ 57,500	\$ 57,304	\$ 2,500
150	Miscellaneous Services	\$ 91,365	\$ 91,365	\$ 75,608	\$ -
160	Utilities	\$ -	\$ -	\$ -	\$ -
170	Judgments	\$ -	\$ -	\$ -	\$ -
180	Pension	\$ -	\$ -	\$ -	\$ -
200	Debt Service	\$ -	\$ -	\$ -	\$ -
210	Debt Service Subsidy	\$ -	\$ -	\$ -	\$ -
300	GF Grants	\$ -	\$ -	\$ -	\$ -
350	GF Projects	\$ -	\$ -	\$ -	\$ -
400	Transfers	\$ -	\$ -	\$ -	\$ -
	TOTAL	\$ 483,613	\$ 474,878	\$ 421,587	\$ 8,735

City of Pittsburgh
2012 Operating Budget

Citizen Police Review Board

Title	2012				2011			
	Number	Rate/ Grade	Hours Days Months	Amount	Number	Rate/ Grade	Hours Days Months	Amount
CPRB Executive Director	1	33	12	\$ 80,081	1	33	12	\$ 78,511
Investigator, As Needed	-	19A	-	\$ -	-	19A	-	\$ -
Investigator	3	19D	12	\$ 133,446	3	19E	12	\$ 130,830
Intake Coordinator	1	17D	12	\$ 39,108	1	17D	12	\$ 38,341
Secretary	1	14E	12	\$ 36,527	1	14E	12	\$ 35,811
Clerical Assistant 2, As Needed	-	07A	-	\$ -	-	07A	-	\$ -
Clerical Assistant 2	1	07D	12	\$ 28,861	1	07D	12	\$ 28,295
TOTAL	7			\$ 318,023	7			\$ 311,788

City of Pittsburgh
2012 Operating Budget

Citizen Police Review Board

Account Description	Account	2012 Budget	2011 Budget	2010 Actual
Salaries-Regular	511000	\$ 318,023	\$ 311,788	\$ 281,776
Salaries-Longevity	512100	\$ -	\$ -	\$ -
Salaries-Allowances	514400	\$ -	\$ -	\$ -
Salaries-In Grade	515000	\$ -	\$ -	\$ -
Vacancy Allowance		\$ -	\$ -	\$ -
TOTAL		\$ 318,023	\$ 311,788	\$ 281,776

Subclass Detail

Subclass	Description	Detail	2012 Amount	2011 Amount
140	Rentals	Building Rent	\$ 60,000	\$ 57,500
			\$ 60,000	\$ 57,500
150	Miscellaneous Services	Cleaning	\$ 1,500	\$ 1,500
		Court Stenographer	\$ 7,700	\$ 7,700
		Investigative Expense	\$ 10,500	\$ 10,500
		Miscellaneous - Lexis Nexis Services	\$ 15,600	\$ 15,600
		Miscellaneous - Other	\$ 265	\$ 265
		Professional Services - Solicitor	\$ 45,000	\$ 45,000
		Telecommunication	\$ 2,000	\$ 2,000
		Promotional Services	\$ 700	\$ 700
		Public Information Services	\$ 5,100	\$ 5,100
		Surveillance Services	\$ 3,000	\$ 3,000
			\$ 91,365	\$ 91,365

City of Pittsburgh
2012 Operating Budget

Citizen Police Review Board

Subclass	Description	2009 Actual	2010 Actual	2011 Budget	2011 Estimate	2012 Budget	2013 Budget	2014 Budget	2015 Budget	2016 Budget
10	Salaries	\$ 284,891	\$ 281,776	\$ 311,788	\$ 276,555	\$ 318,023	\$ 325,974	\$ 335,753	\$ 345,826	\$ 356,201
20	Premium Pay	\$ 29	\$ -	\$ -	\$ -	\$ -	\$ -	\$ -	\$ -	\$ -
30	Education and Training	\$ 5,389	\$ 2,687	\$ 7,232	\$ 6,400	\$ 7,232	\$ 7,304	\$ 7,377	\$ 7,451	\$ 7,526
40	Fringe Benefits	\$ -	\$ -	\$ -	\$ -	\$ -	\$ -	\$ -	\$ -	\$ -
50	Uniforms	\$ -	\$ -	\$ -	\$ -	\$ -	\$ -	\$ -	\$ -	\$ -
100	Supplies	\$ 5,094	\$ 3,239	\$ 5,160	\$ 4,505	\$ 5,160	\$ 5,263	\$ 5,368	\$ 5,475	\$ 5,585
110	Materials	\$ -	\$ -	\$ -	\$ -	\$ -	\$ -	\$ -	\$ -	\$ -
120	Equipment	\$ 1,506	\$ 974	\$ 1,576	\$ 1,326	\$ 1,576	\$ 1,608	\$ 1,640	\$ 1,673	\$ 1,706
130	Repairs	\$ -	\$ -	\$ 257	\$ 125	\$ 257	\$ 262	\$ 267	\$ 272	\$ 277
140	Rentals	\$ 57,304	\$ 57,304	\$ 57,500	\$ 57,304	\$ 60,000	\$ 61,200	\$ 62,424	\$ 63,672	\$ 64,945
150	Miscellaneous Services	\$ 86,143	\$ 75,608	\$ 91,365	\$ 74,601	\$ 91,365	\$ 93,192	\$ 95,056	\$ 96,957	\$ 98,896
160	Utilities	\$ -	\$ -	\$ -	\$ -	\$ -	\$ -	\$ -	\$ -	\$ -
170	Judgments	\$ -	\$ -	\$ -	\$ -	\$ -	\$ -	\$ -	\$ -	\$ -
180	Pension	\$ -	\$ -	\$ -	\$ -	\$ -	\$ -	\$ -	\$ -	\$ -
200	Debt Service	\$ -	\$ -	\$ -	\$ -	\$ -	\$ -	\$ -	\$ -	\$ -
210	Debt Service Subsidy	\$ -	\$ -	\$ -	\$ -	\$ -	\$ -	\$ -	\$ -	\$ -
300	GF Grants	\$ -	\$ -	\$ -	\$ -	\$ -	\$ -	\$ -	\$ -	\$ -
350	GF Projects	\$ -	\$ -	\$ -	\$ -	\$ -	\$ -	\$ -	\$ -	\$ -
400	Transfers	\$ -	\$ -	\$ -	\$ -	\$ -	\$ -	\$ -	\$ -	\$ -
TOTAL		\$ 440,357	\$ 421,587	\$ 474,878	\$ 420,816	\$ 483,613	\$ 494,803	\$ 507,885	\$ 521,326	\$ 535,136